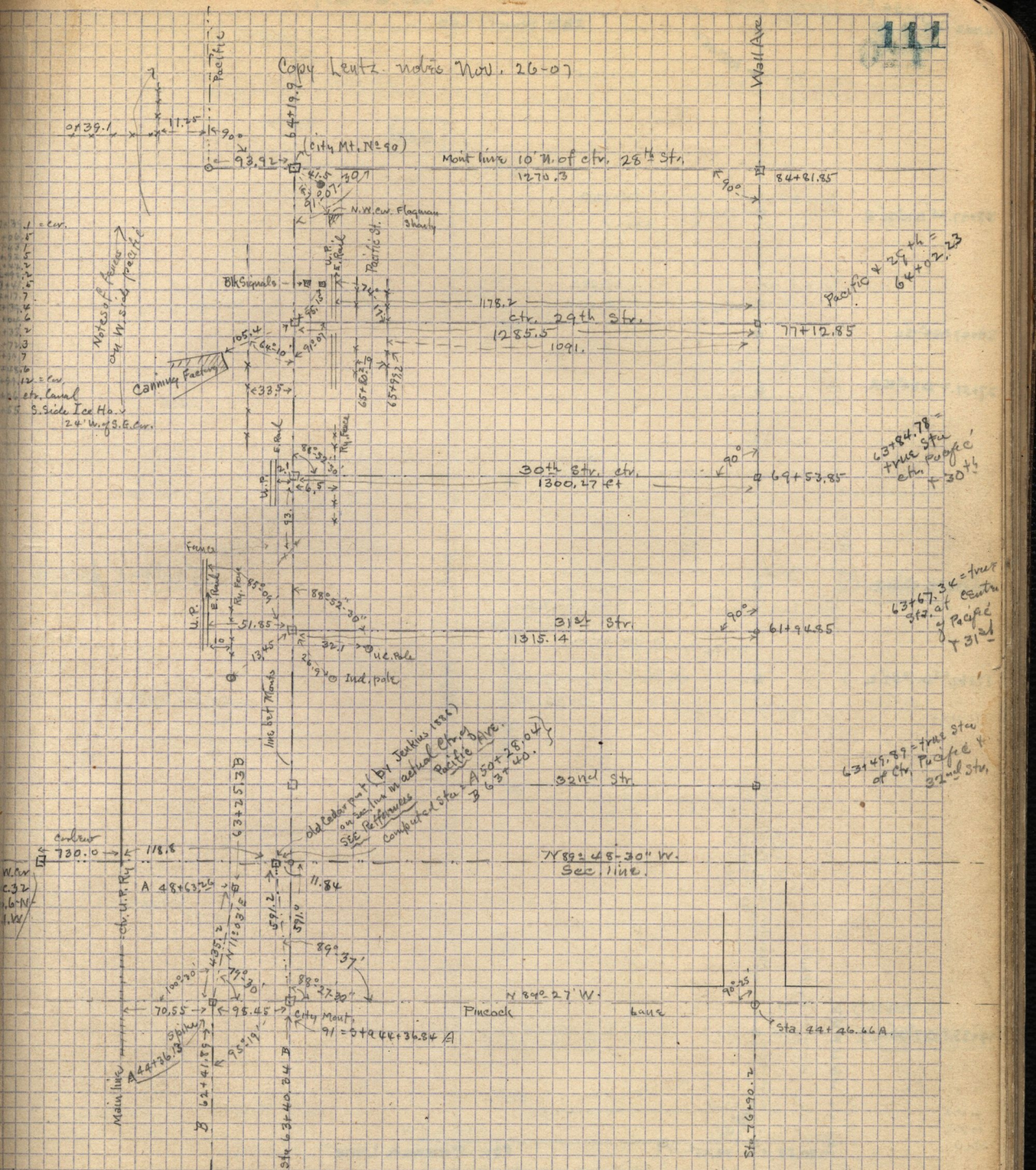


Copy Lantz notes Nov. 26-07



Ties to old cedar post on
 Sec. line in ctr. Pacific Ave.
 S.E. 55.4 tel pole
 S.E. 58.4 Hub
 S.W. 55.8 tel pole
 N.E. 98.0 tel pole
 N.W. 97.3 tel pole

(See also page 104 -)

also p. 112 -

63+84.78 = true sta
 true Pacific
 ctr. + 30'
 63+67.34 = true
 sta. at center
 of Pacific
 + 31'
 63+49.89 = true sta
 of ctr. Pacific +
 32nd str.